

Service Letter No. 2819

Universal Cockpit Display (UCD) & Application Server Unit (ASU) display of WSI textual Terminal Aerodrome Forecast (TAF) Information

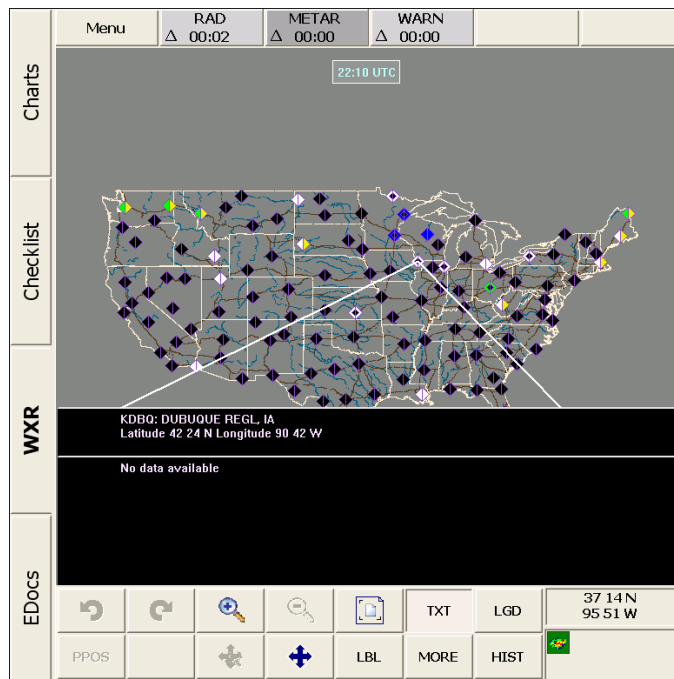
The FAA has requested the National Weather Service (NWS) provide a 30-hour Terminal Aerodrome Forecast (TAF) for 32 airports. Beginning November 5, 2008, *WSI, Inc.* incorporated this new NWS 30-hour TAF format into all TAFs.

Due to a software limitation, the UCD/ASU (P/N 3040-XX-XX) will not display textual TAF information associated with the new TAF format for these airports. The colored diamond TAF icon on the weather map will continue to be displayed correctly and can be interpreted with the associated Weather Phenomena LEGEND. However, when textual TAF information is selected, a message of "No Data Available" will be displayed. Examples of what will be seen are provided below.

A UCD/ASU software modification is planned for future release to recognize the new TAF format and display appropriate textual information when selected.

EXAMPLES: New ASU WXR message will be displayed for the affected airports:

When "TXT" button is pressed and an active TAF icon is selected:



SERVICE LETTER

When the “MORE” button is pressed while the text window is displayed:

